

CP-GPC-TA50L5-SE

5MP Full-Color Guard+ Bullet Camera - 50Mtr.

- 1/2.7" 5MP PS CMOS Image Sensor (0.9407 cm)
- Max 25/30fps@5MP
- DWDR, 2D-NR, AWB, AGC, BLC, HLC
- 6mm fixed lens
- Illumination Range of 50 Mtrs, IP67
- 24/7 color Imaging
- CVI/CVBS/AHD/TVI switchable



System Overview

With the help of the new Guard+ Series of Cameras by CP PLUS, surveillance at night has substantially been made easier as vividly colorful images can be captured even in a completely dark scene. The leading part in this highly efficient surveillance solution is played by the 5MP Full-Color Cameras that show the detailing in the varied colors of the object in the scene even during night time.

Functions

Full Color

The Full-Color technology that has been ingrained in this camera lets you enjoy an image in full-color even during night time as this technology automatically illuminates the image with the accurate detailing of colors from the scene.



CP-GPC-TA50L5-SE

5MP Full-Color Guard+ Bullet Camera - 50Mtr.

Functions

Illumination Range

Numerous crystal LEDs provide detailed images even in very low light conditions. These LEDs adjust the infrared intensity for distinct images in dark environments for up to 50mtrs.

UNI+ technology

CP PLUS Analog HD cameras offer compatibility across all the available technologies - CVBS, TVI, HDCVI and AHD making upgrading simple and hassle-free.

Power Protection

With a voltage tolerance range of ± 30 , these cameras are suitable even in fluctuating power conditions.

Plug & Play

CP PLUS Guard+ cameras are simple to configure and install.

About CP PLUS

The brand that is on its way to lead the world when it comes to the security and surveillance industry, CP PLUS, keeps bombarding the market with the most reliable range of products that have been designed carefully and methodically to automate the whole surveillance and security process, no matter how big your premises are.

It was the initiative to help the public in the area where they are the most vulnerable and to empower the sense of safety in our hearts that had conceptualized CP PLUS. And embarking on its mission to make the world a safer and more secure place has taken the brand's journey to unprecedented levels even when compared to international competitors.



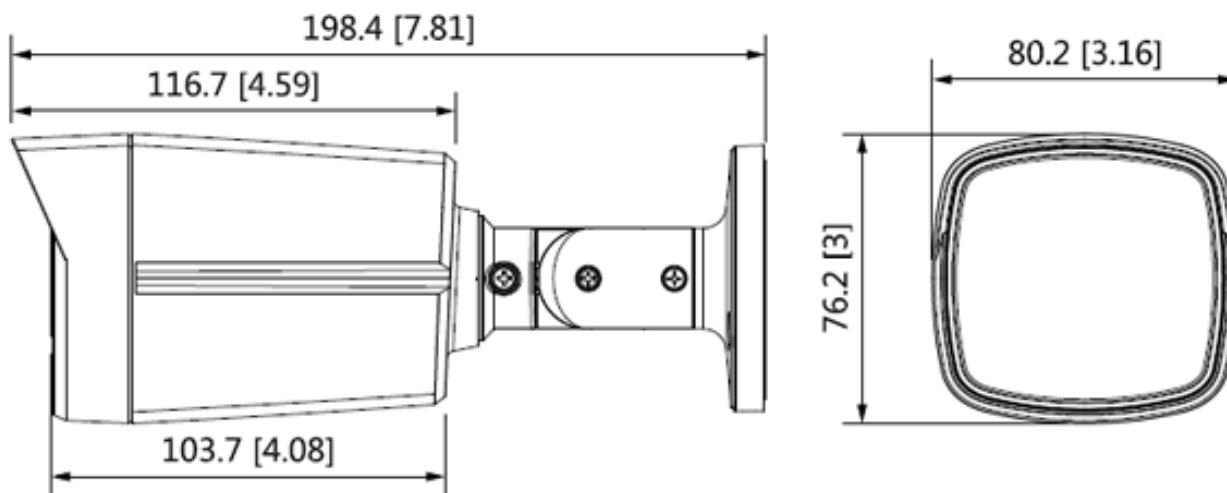
CP-GPC-TA50L5-SE

5MP Full-Color Guard+ Bullet Camera - 50Mtr.

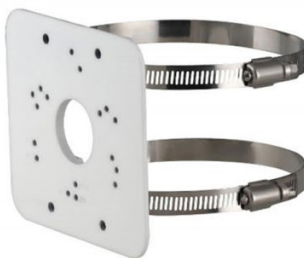
Feature	Specification
Image Sensor	1/2.7" 5MP PS CMOS (0.9407 cm)
Minimum Illumination	0.005 Lux/F1.6, 0 Lux white light on
Shutter Speed	PAL: 1/25~1/100000s NTSC: 1/30~1/100000s
White Balance	Auto/Manual
Lens	6mm
Iris Type	Fixed Iris
Mount Type	M12
Max Aperture	F1.6
Close Focus Distance	6mm: 3.2m
DORI Distance	6mm: 124m(Detect), 49.6m(Observe), 24.8m(Recognize), 12.4m(Identify)
Noise Reduction	2D-NR
Gain Control (AGC)	Auto/Manual
Back Light Compensation	BLC/ HLC/ DWDR
Angle of View	6mm: 65° x 57° x 30° (diagonal x horizontal x vertical)
S/N Ratio	>65dB
Video Streaming	CVI: PAL: 5M@25 fps; 4M@25 fps; 1080P@25 fps; NTSC: 5M@25 fps; 4M@30 fps; 1080P@30 fps; AHD: PAL: 4M@25 fps; NTSC: 4M@30 fps TVI: PAL: 4M@25 fps; NTSC: 4M@30 fps CVBS: PAL: 960H; NTSC: 960
Video Output	Video output choices of CVI/TVI/AHD/CVBS by one BNC port
Resolution	5M (2592 x 1944); 4M (2560 x 1440); 1080P (1920 x 1080); 960H (704 x 576/704 x 480)
Mirror	Off/on
Privacy Masking	Off/on (8 area, rectangle)

Feature	Specification
Illumination Distance	Illumination Range of 50 Mtr.
Smart Light	Yes
Power Source	12V DC $\pm 30\%$
Power Consumption	Max 3.1W (12V DC, White Light on)
Operating Temperature	-40°C ~ +60°C (+40°F ~ 140°F)/ <95% (non-condensation)
Storage Temperature	-40°C to +60°C (-40°F to 140°F)/ <95% (non-condensation)
Weatherproof Standard	IP67
Casing	Metal front cover + plastic main body + plastic bracket
Dimension	198.9 mm \times 80.2 mm \times 76.2 mm (7.83" \times 3.16" \times 3.0)
Weight	0.35kg

Dimensions (mm/inch)



Accessories : Optional



CP-UA-B2P
Pole Mount

Company Name:

CP PLUS (Aditya Infotech Ltd.)
F-28 Okhla Industrial Area, Phase 1,
New Delhi 110020, INDIA

Contact Mail ID :- customercare@cpplusworld.com