

How to create Tour in the DVR

How to create Tour in the DVR:

- Now right click on the DVR and go to the **main menu** option, Please refer **fig no. 1**

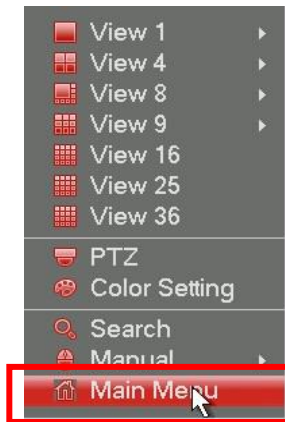


Figure no. 1

- Now click on the **Settings** option in the main menu, Please refer **fig no. 2**

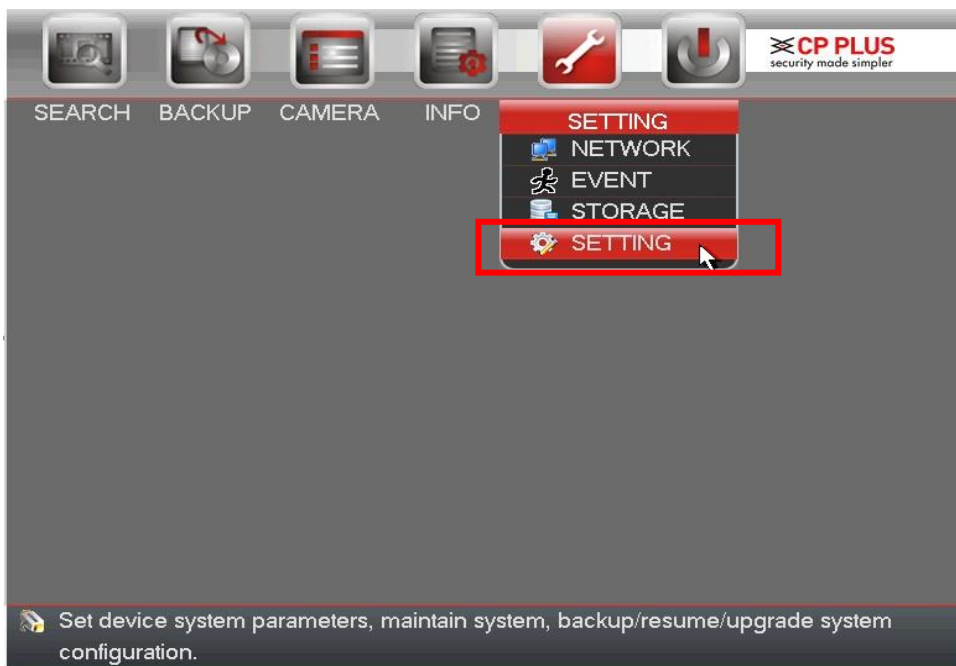
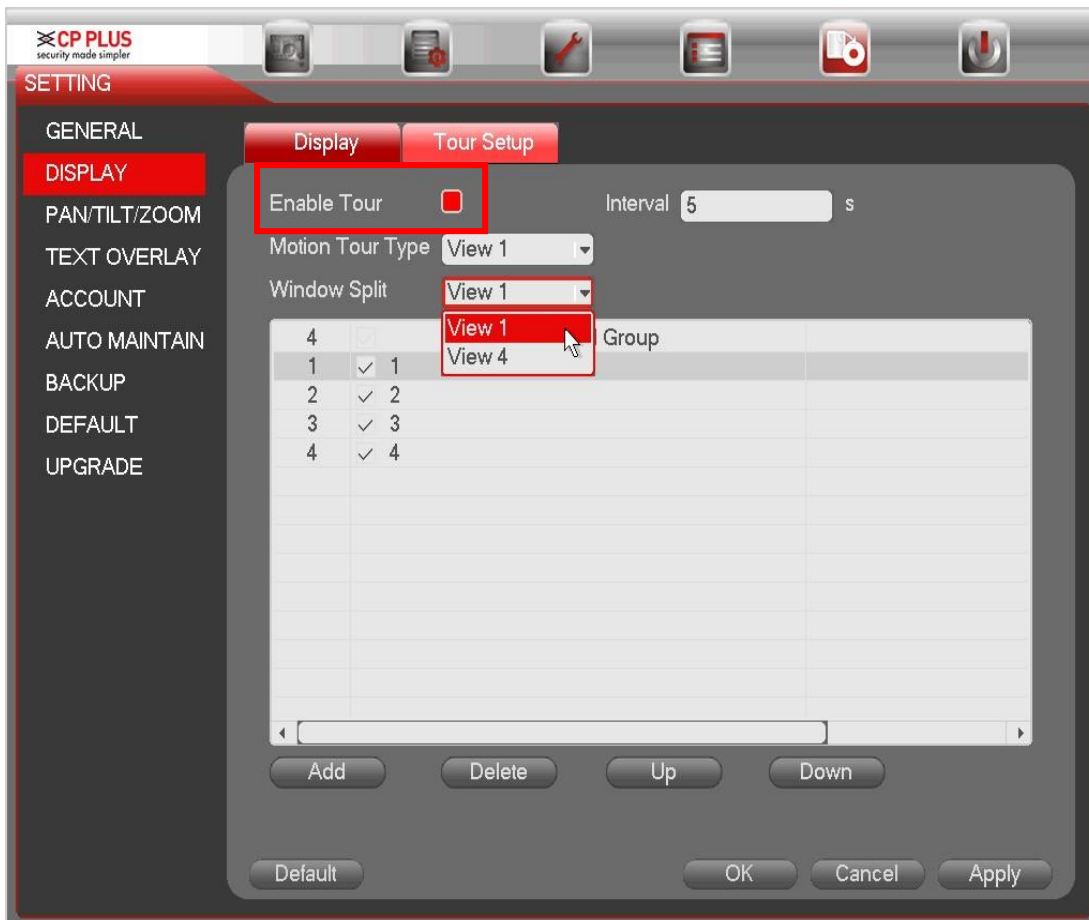


Figure no. 2

- Go in the Display option **Enable** Tour option as shown in the below Figure.



- **Enable Tour:** Highlight box here to enable this function.
- **Interval:** System supports 1/8/-window tour. Input proper interval value here. The value ranges from 5-120 seconds. It is for schedule tour/alarm/motion detects tour.
- **Split:** You can select window split mode from the dropdown list.
- **Channel Group:** It is to display all channel groups on current split mode. You can edit and delete a channel group here. Double click an item in the list; you can edit its channel group setup. Right now system max supports 32.
- **Add:** Under specified window split mode, click it to add channel group.
- **Delete:** Click it to remove selected channel group.
- **Move up:** Click it to move current selected channel up.
- **Move down:** Click it to move current selected channel down.
- **Default:** Click it to restore default setup.

- After all the settings you can view the tour. See below figure



- Use mouse or Shift button to switch  and  button to enable /disable tour. 
Means the **Tour function is enabled** And  means **Tour function is disabled**



Website:- www.cpplusworld.com

Email id:- sales@cpplusworld.com; support@cpplusworld.com
