

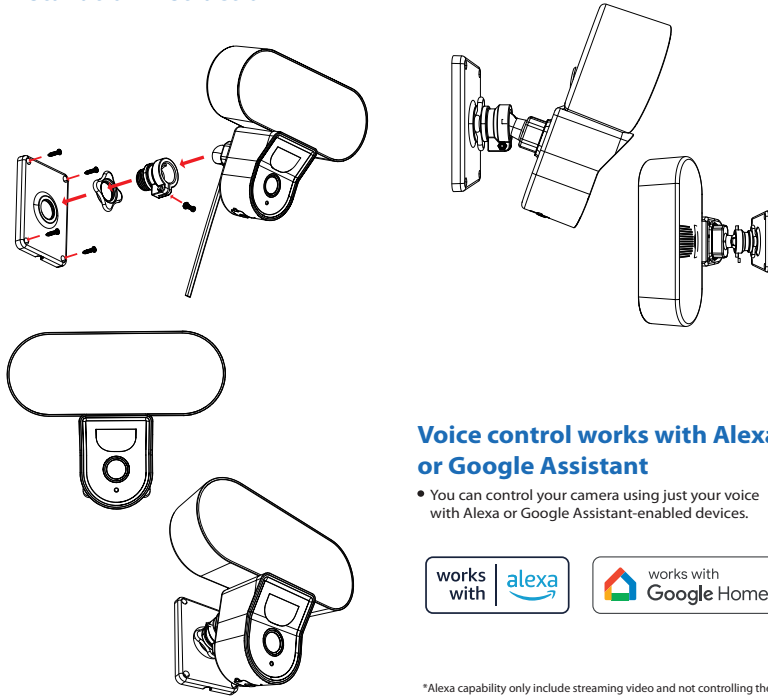


Thank you for choosing CPPlus ezykam.

For further assistance, you can reach us via [ezycare@cpplusworld.com](mailto:ezycare@cpplusworld.com)

**\*\* Please read the instruction carefully before using the product \*\***

## Installation Instruction



### Voice control works with Alexa or Google Assistant

- You can control your camera using just your voice with Alexa or Google Assistant-enabled devices.



\*Alexa capability only include streaming video and not controlling the light.

## Frequently Asked Questions

- Can I share camera with family and friends?**  
Yes, you can share your cameras with family and friends who will have access to view the camera.
- What's the Wireless Range?**  
The range of your home Wi-Fi is heavily dependent on your home router and the conditions of the room. Check with your router specifications for exact range data.
- The camera appears offline or unreachable?**  
Make sure you entered the correct Wi-Fi password during the Wi-Fi setup. Check whether there is any Internet connection problem. If the Wi-Fi signal is too weak, reset your Wi-Fi router and try again.
- Cannot connect to your Wi-Fi network.**  
Make sure you entered the correct Wi-Fi password during the Wi-Fi setup. Check whether there are any Internet connection problems. If the Wi-Fi signal is too weak, reset your Wi-Fi router and try again.
- How many cameras can I control?**  
CP Plus app can control unlimited number of cameras in unlimited amount of locations. Your router may have a limit of how many cameras can be connected to one router.

## System Requirements

- Smartphone running iOS® 9.0 or higher or Android™ 5.0 or higher
- Existing Wi-Fi Network with internet connection

## Technical Specifications

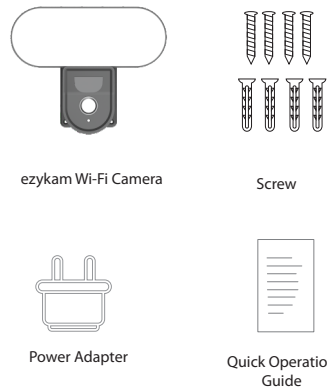
- Camera: up to 4MP (2560x1440) at 20frames / sec. H.265 encoding
- Field of view: 3.6MM 85.9°(H) , 45.5°(V),107 °(D)
- Audio: Internal Speaker and Microphone
- Storage: supports up to 128GB Micro SD card (not included)
- Wi-Fi: IEEE 802.11b/g/n, 2.4GHz (not compatible with 5GHz Wi-Fi networks)



## Quick Operation Guide F42A

Thank you for choosing CP PLUS ezykam. Get started using your new devices by downloading ezykam+ app, one convenient app that manages everything straight from your smart phone. Easily connect to your home Wi-Fi and control multiple devices from the touch of your fingertips

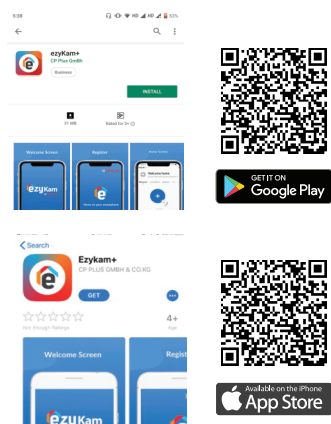
## What's in the Box



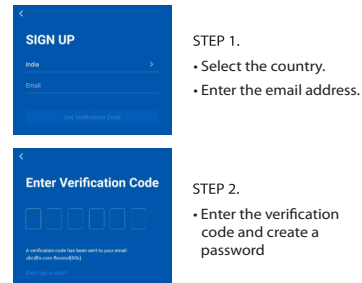
## Get Ready

- Know your Wi-Fi network and password.
- Make sure your mobile device is running iOS® 9.0 or higher or Android™ 5.0 or higher.
- Make sure you're connecting to a 2.4GHz Wi-Fi network (It can't connect to 5GHz networks)

### 1. Download the ezykam+ app from App Store or on Google Play.



### 2. Register an account on your ezykam+ app.



### 3. Plug in

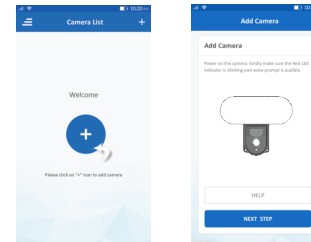
#### How do I reset my camera?

- Use the reset pin to press the Reset Button for several seconds until the camera starts to beep.
- Optional:** Insert Micro SD card

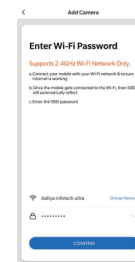


### 4. Add Camera

- Open **ezykam+** app, click "+" on the top right corner of the "HOME" page, then select "Specific model to add".
- Make sure that the Red LED indicator is blinking and voice prompt is audible.

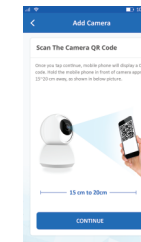


- Enter your "Wi-Fi network and password", click "CONFIRM".



### 4.0 Add Camera

- Read the instruction about "Scan the camera QR code" and click "Continue".

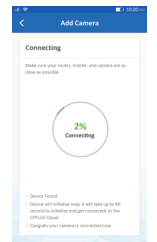


- Scan the QR Code on your phone with camera. Heard a voice prompt, click "Heard the beep"



### 4.1 Add Camera

- When the indicator light on the device turn to steady blue light, the network configuration is complete.



- Please refer to the specific APP interface if there are any difference.